

FROM THE BAIS ADMINISTRATION TEAM

At BAIS, your child's safety and education are our highest priorities. COVID has proven to be a difficult challenge as it has threatened both the health and safety of our children while also disrupting their education. As a leadership team, our desire has always been to try to find the balance between safety and what we know is best for our children's education.

In light of the recent wave of Omicron cases and new guidelines being passed down from the Health Department, the leadership team at BAIS has been updating our COVID-19 protocols. We praise God that despite having several cases on campus, there seems to have been little spread of the virus at school - in fact out of the hundred or so close contacts that were identified under our previous protocols, only two additional students outside of family clusters tested positive. For both of these, it was questionable if transmission actually occurred on campus.

So, we thank God for his merciful protection and we thank you all for your vigilance and cooperation. It is therefore our desire to more narrowly define and identify close contacts and minimize disruptions to learning. What do these changes look like?

If a student or teacher tests positive on campus, we will conduct a **more thorough interview in order to identify close contacts**. In accordance with the Indonesian Health Department and the CDC, we will be using the definition to the right to identify close contacts.

- If a student or teacher tests positive at school; **they will be isolated, interviewed, and sent home.**
- Depending on the time of day and grade level, close contact parents will be notified to come and pick-up their child (**the entire school will not close for the day**).
- **Anyone who has had COVID within the last 90 days** will be asked to monitor symptoms, but will NOT be asked to isolate; they may remain at school.
- Close contacts will have a choice to test on Day 1, but **will be required to test via PCR on Day 5**. If negative, they may return to school.
- Any **close contacts who develop symptoms** will need to test via RT-Antigen or PCR.
- All **confirmed cases may return to school:**

MARCH

11 Third Quarter Ends/Half Day

12 SAT

14 Fourth Quarter Begins

14-18 SEWWW

21-25 Second Semester Break

31 Battle of the Books

APRIL

1 Elementary Report Cards Go Home

7-9 Drama Production

15 Good Friday

29 Mid Quarter Grades on PS

Identifying Close Contact

People who have a history of contact with probable cases or with confirmed cases of COVID-19 with the following criteria:

1. Face-to-face contact/adjacent to confirmed cases in a radius of 1 meter for a total of 15 minutes in a 24 hour period.
2. Direct physical contact with confirmed case patients (i.e. shaking hands, holding hands, etc.)
3. People who provide direct care for cases confirmation without using standard PPE
4. Contact occurs within 2 days of the confirmed case either developing symptoms or testing positive, whichever comes first
5. Other situations that indicate contact based on local risk assessment set by the investigation team local epidemiology.

**If a student or teacher has had COVID within the last 90 days, they will NOT need to isolate, but will be advised to monitor symptoms.*

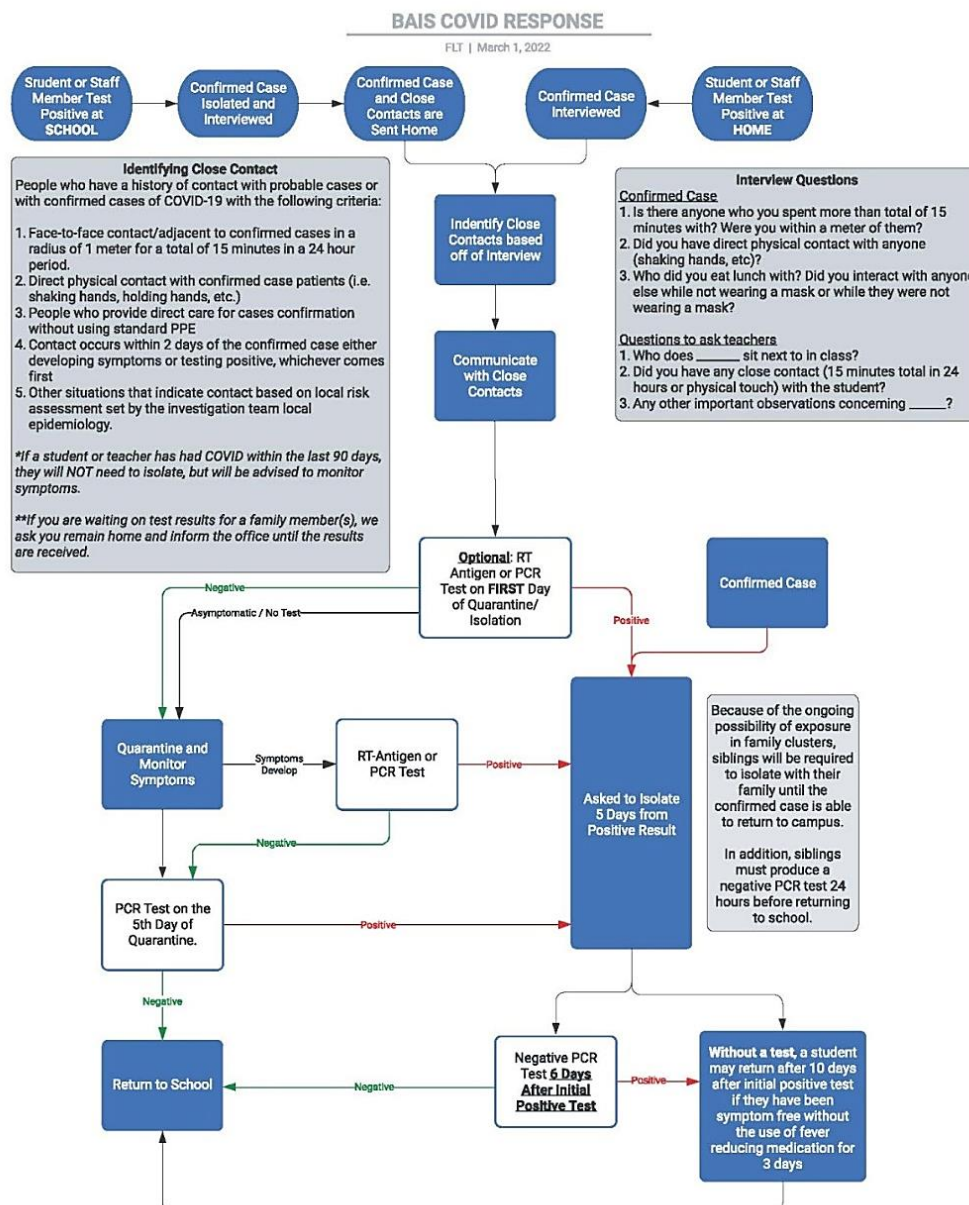
***If you are waiting on test results for a family member(s), we ask you remain home and inform the office until the results are received.*

- If they test negative on a PCR test on Day 6 after their initial positive test result
- Or after 10 days of isolation
- **We will no longer be closing the school** if there is a case on campus; we will deep clean classrooms overnight
- We ask that if **a family member, who is at home, is waiting on a COVID test result because of possible exposure or the development of symptoms** that students remain home until the test result is confirmed

What will we continue to do?

- Students will be required to wear **medical masks** (KN95, etc.)
- Desks will be **socially distanced**
- Doors and windows **kept open for ventilation**
- **Tables and equipment sanitized** before use and between classes
- **Elementary Lunch Time:** 2 students per table in outdoor pavilion
- **Middle School Lunch Time:** socially distanced seating outdoors at the pool
- **High School Lunch Time:** all eating at the outdoor pavilion and soccer bleachers; 4 students per table
- **Break Time:** all eating at the outdoor Pavillion; **students must bring snack from home** (Senior Store remains temporarily closed)

Here is a visual representation of the above protocols ([link to pdf version](#)):

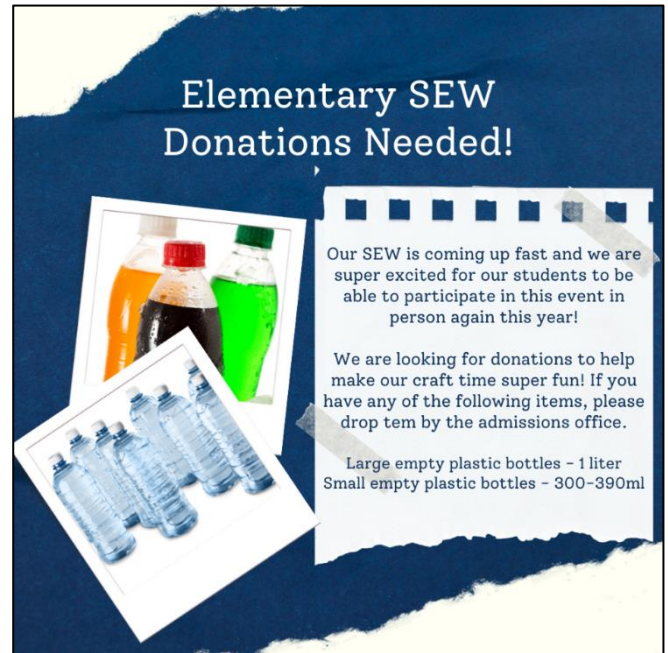


WWW NEWS

For WWW, we have the opportunity to show Christ's heart by loving on Yayasan Sinar Fajar Indonesia Rumah Pengharapan Baru. The New Hope House orphanage in Lembang serves babies up to teens. We are inviting our BAIS family to encourage this ministry by supplying the following items:

- a. Gently used clothing/shoes sizes pre-K to adult
- b. New underwear in package for sizes pre-K to adult (girl & boy)
- c. Diapers & Pull-ups
- d. Vitamins for all ages
- e. Hygiene items:
 - Toothbrushes (various sizes)
 - Toothpaste
 - Bodywash
 - Shampoo
 - Handwash

You can drop these items off when you pick up and/or drop-off kids or learning supplies! This will be available March 7-15th!!! We can't wait to encourage and bless this orphanage! Thank you for being the hands and feet of Christ!



Congratulations to Maelgywn Hallatu, Sangyun Nam & Michella Felice!

Maelgywn has been accepted to:

- Soka University of America in California, the United States of America
- Dordt University in Iowa, the United States of America
- University of Toronto, Canada

Sangyun has been accepted to the following schools in the United States of America:

Stony Brook University in New York
California State University, Chico
University of Massachusetts Boston

Michella has been accepted to Raffles Milano Istituto Moda e Design in Italy.

When you see them around campus or the Google meet - make sure to give them a covid-high-five. Please be praying for the rest of the 12 grade class as they are either working or on waiting for responses to applications.



THE UNIVERSITY OF SYDNEY

Virtual Open Day Indonesia

Prepare your study at Australia's 1st university.

Gain information about our prestigious rankings, entry requirements, study grants and scholarships.

Register at linktr.ee/sahabatusyd

Sunday, 13 March 2022

GROUP OF EIGHT AUSTRALIA

CRICOS 00026A PAGE 1 of 3



THE UNIVERSITY OF SYDNEY

Virtual Open Day Indonesia Schedule

Sunday, 13 March 2022

Undergraduate Session (Bachelor's Degree)

10:00 WIB - Why USYD & Admissions 101 by Team Indonesia
Learn about entry requirements, admission process and documents, majors selection, as well as study grants and scholarships for the whole duration of your study.

11:00 WIB - Meet Our Current Students
Martha Prawiradirdja - Bachelor of Science
Alumnus of Binus School Simprug
Raymond Valentino - Bachelor of Commerce
Alumnus of SMAK St. Louis 1 Surabaya

Postgraduate Session (Master's & PhD Degree)

14:00 WIB - Why USYD & How to Get LoA by Team Indonesia
Find out the process to get Letter of Acceptance from the University of Sydney.

15:00 WIB - Meet Our Current Students
Eric Putra Tjioe - Master of Commerce (Extension)
Accelerate your career with Master's degree
Vuzza Ajeng - Master of English Studies, LPDP Awardee 2021
Pursue your postgraduate degree as sponsored student

GROUP OF EIGHT AUSTRALIA

CRICOS 00026A PAGE 2 of 3



THE UNIVERSITY OF MELBOURNE

Study at Australia's No. 1 University* Indonesia Information Day

Be inspired, challenged and supported by some of the world's brightest minds. At Melbourne, you'll learn to think critically, creatively and collaboratively. Join our hybrid event to find information on undergraduate and graduate courses, including Trinity College Foundation Studies.

Day and Date : **Saturday 12 March 2022**
Time : **11.00-17.00 WIB**

Venue :

- **Offline at The Westin Hotel, Jakarta***
- **Online via Zoom**

Limited space available, register now!
This event will follow safety and healthy Covid-19 protocol and guidelines.

*If there's any limitation due to PPKM, the event will still run online via Zoom

Registration:
go.unimelb.edu.au/i2ki

Contact:
Ms Mery Chrisyanti
mery.chrisyanti@unimelb.edu.au
+62818 0606 9839

The University of Melbourne offers me a first-class education and assures me a promising career prospect. Its academic reputation and excellence is not to be debated. Melbourne is also known as a very friendly and vibrant city to international students, making sure that I feel welcomed within the community. The scholarship helps me to believe that I am capable of achieving more than I can imagine.

Vanessa Famdanny
Bachelor of Science
Melbourne International Undergraduate Scholarship 2021 Recipient

*Times Higher Education World University Ranking 2022

For more information, visit study.unimelb.edu.au

CRICOS PROVIDER CODE: 00119K